

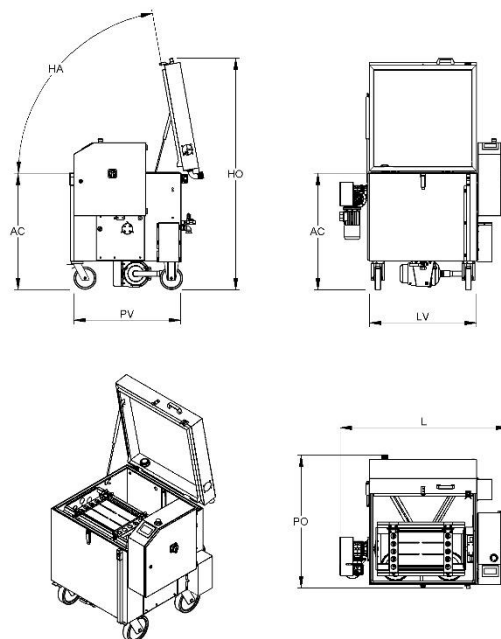
TWISTER

Twister is a machine that performs the washing of parts in continuous rotation along a horizontal axis, in immersion.

The pieces are placed inside an electrowelded stainless steel mesh box with lid.

It is particularly suitable for washing small or medium sized pieces, such as turning parts, gaskets, etc..

The machine is available in LT (without insulation, maximum and adjustable temperature up to 60°C) and HT (insulated, maximum and adjustable temperature up to 80°C) versions.



Dimensions and layout	TW80
depth with opened machine (PO)	105 cm
height with opened machine (HO)	189 cm
loading height (AC)	98 cm
noise HT (RU_HT)	70 dBa
noise LT (RU)	70 dBa
opening angle (HA)	80°
weight (W)	220 kg
width (L)	125 cm

Connections	TW80
Cabin vent outlet	Ø50 mm
Compressed air blower solenoid valve	F 1"
Compressed air intake	F 1/4"
Deoiling oil drain	M 1/2"
Electrical connection: plug	3P+N+PE 32A
Emptying pump	F 1"
Steam extraction	Ø50 mm
Tank liquid drain	F 1"
Water filling solenoid valve	F 1/2"

Technical data	TW80
Drying	4,5 kW
Heating tank 1	6 kW
Load capacity	40 kg
Motor for parts rotation	0,09 kW
Pump 1	0,55 kW - 1/2 bar 150/200 lt/min
Steam exhauster	0,09 kW 70 Nmc/h
Tank 1 capacity	160 lt

Technical data	TW80
Tank emptying pump	0,37 kW

Technical features	TW80
Automatic calculation of electricity consumption in real time	★
Color 4" touchscreen display for settings and programs	★
Cover border gasket	★
Door closure assisted with gas springs and fastening hook	★
Drain valves for emptying tanks	★
Gearmotor for basket rotation with torque limiter and centering sensor	★
Heating of the liquid with stainless steel electric heating element	★
HT Version	★
Intake and delivery pump hose (easy maintenance)	★
Internal ed external welding bleaching	★
IP55 main electrical box, management with touchscreen PLC (DGT V4)	★
Machine equipped with wheels for handling	★
Manual water filling valve	★
Minimum level switch	★
Safety limit switch on cover opening	★
Siemens electric power parts	★
Stainless steel electric pump with special seals	★
Structure and sheet metal in contact with liquid in AISI 304L stainless steel	★
Weekly programming to start heating and deoiler (if installed)	★

Accessories	TW80	Cod.
Automatic chemical product dispenser, installed in bath 1	✓	DAD#1
Bag filter in stainless steel, installed in the bath 1	✓	FS#1
Centrifugal steam condenser S on wheels [C]	✓	CCEC_S
Compact pneumatic oil separator	✓	MD
Customization for use of detergents with bacteria	✓	BIO
Detergent suction tank for automatic dispenser	✓	SDAD
Device for remote connection and remote support for PLC Siemens	✓	TELSIE
Device remote connection and remote support for HMI Weintek	✓	TELWEI
Emptying pump	✓	SV
HMI Siemens KTP - Display (only for Siemens PLC)	✓	HMIS
Hot air drying with resistor and air blade side channel blower [B]	✓	ARS
Industry 5.0 Ready (Energy Meter)	✓	IND5
Kit for Industry 4.0 for HMI Weintek	✓	IND4WEI
Kit for Industry 4.0 for PLC Siemens	✓	IND4SIE
Kit for use with abrasive contaminants in the washing liquid	✓	PCA
Led light tower with 3 lights and sound alarm	✓	TL3
Magnetic spark plug for bag filter size 2 for ferrite powder	✓	MAGFS2
Maximum liquid level control in tank 1 and filling solenoid valve	✓	RIEMP#1
Mixed resin demineralizer M20 with conductivity meter	✓	ADDP
PLC Siemens S7 1200 - HMI touchscreen Weintek	✓	PLS
Rinsing by water supply and direct drain outlet	✓	RSD
Stainless steel basket 471 x 321 x H200 mesh 12x12 mm with lid	✓	CSS1220
Stainless steel basket 471 x 321 x H200 mesh 4x4 mm with lid	✓	CSS0420
Stainless steel basket 471 x 321 x H200 mesh 6x6 mm with lid	✓	CSS0620
Stainless steel basket 471 x 321 x H300 mesh 12x12 mm with lid	✓	CSS1230
Stainless steel basket 471 x 321 x H300 mesh 6x6 mm with lid	✓	CSS0630
Stainless steel fittings and valves kit (for parts that are in contact with liquids)	✓	PFC
Steam extraction [A]	✓	ASP

Accessories notes legend

[A]: It is included in the HT version

★ = included in the basic model, ✓ = available on request, ✗ = not available